



Ordering photographs

Many of the photographs on the Leodis website are available to order. The majority of photographs, being copyright of the Library Service, along with others we have been allowed to sell in this way, are available to order as photographic copies of the originals. Images can also be licensed for reproduction (contact us for further details).

For more information:

Local and Family History

**Leeds Central Library, Calverley Street,
Leeds, LS1 3AB**

T: 0113 378 6982

E: localandfamilyhistory@leeds.gov.uk

W: www.leeds.gov.uk/libraries

Blog: secretlibraryleeds.net

Tickets:

ticketsource.co.uk/Leedslibraryevents

**Scan the QR code to sign up for our
Heritage newsletter**



Opening times

Monday – 9.00am – 8.00pm

Tuesday – 9.00am – 8.00pm

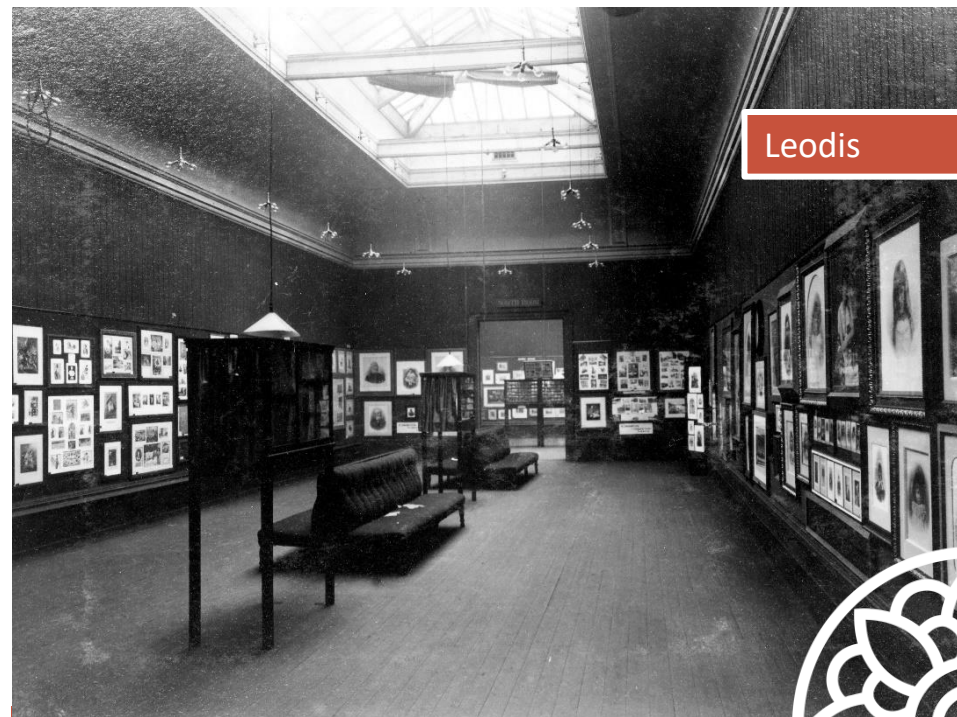
Weds – 9.00am – 8.00pm

Thursday 9.00am – 5.00pm

Friday – 9.00 – 5.00pm

Saturday – 10.00am –
4.00pm

Sunday - Closed



Leodis

Leodis Archive

*The premier collection of historic photographs and
images for Leeds*

Browse the site: www.leodis.net

Above: Interior view of the City Art Gallery during the
International Photographic Exhibition in 1891. Copyright: Art
Gallery



    @LeedsLibraries





About Leodis

Leodis is an online photographic archive containing over 70,000 images of Leeds, old and new. It is managed by Leeds Libraries. The Local and Family History Library has a huge collection of photographs relating to the city. Before the Leodis site was set up, these were only accessible by visiting the library and searching card indexes. The Library Service was keen to promote the collections and make them more easily accessible for a wider audience. The Council Internet team initially added some photographs to the Leeds City Council site to gauge demand. The high level of interest led to the creation of the Leodis site.



The beginning

A grant was obtained from the New Opportunities Fund (now the Big Lottery) to fund the project for two years. The Library Service managed the project, which aimed to make available 40,000 images of Leeds.

The main collections from the Local and Family History Library have been added to the site as well as local collections held in branch libraries such as Morley, Rawdon, Rothwell and Horsforth.

Local partners – the Leeds Civic Trust, the Thoresby Society, Leeds Museums and Galleries and the West Yorkshire Archive Service – have also provided material from their photographic collections.

The largest collection of photographs on the site is the City Engineers' collection. These were photographs taken for the City Council from around 1890 to the 1960s, of areas of municipal concern such as pre-“slum” clearance or road alterations.



These were taken as working records for the engineers at the time, but provide a great record of changes to the city. This collection of photographs has been physically split between Libraries and Archives, but through Leodis the collection has now been digitally reunited.

Many other collections are now part of the Leodis site, which continues to be one of the most invaluable resources available to those interested in the local and family history of Leeds. New images are added all the time and we welcome further donations.

Leodis relaunch

Leodis was relaunched in 2021 with a new, modern design including mobile and tablet functionality. There are several new facilities available on the site, designed to help the viewer find exactly what they are looking for.

Curated Galleries can be viewed, based around particular themes.

Users can also browse the Latest additions or select the Pot luck feature, which returns a random selection of images.

Users of the site are able to add comments (pending approval by a moderator) to images. These comments, together with the detailed photo descriptions, can provide a valuable insight into areas and aspects of Leeds not otherwise covered in the standard historical writing on the city. Corrections are also welcome.